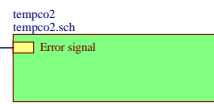


ERROR SIGNAL
 (-) Negative if object is too hot
 (+) Positive if object is too cold



FLINDERS UNIVERSITY SCHOOL OF PHYSICAL	OF S.A. SCIENCES
DESIGN REF _____	

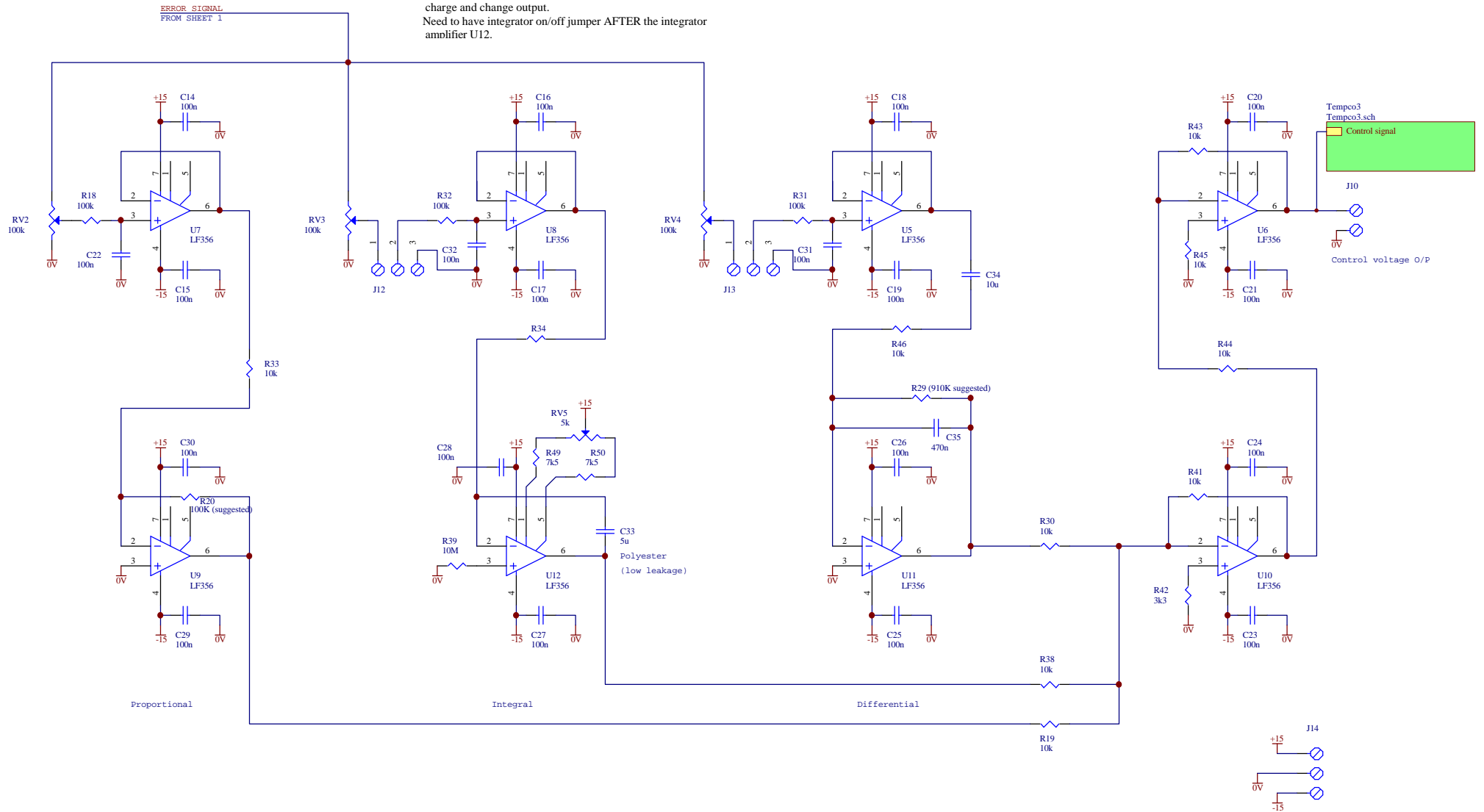
LASER DIODE TEMPERATURE CONTROLLER

Title	DATE DRAWN	JOB NO.
Size	Number	Revision
A3	PCB NO.	ENG NO.
Date:	28-Sep-2001	Sheet
File:	D:\data_atom\electronics\melbun\temp controller\temp controller.dtb	10K (9-25)

A3-354

FUTURE IMPROVEMENTS

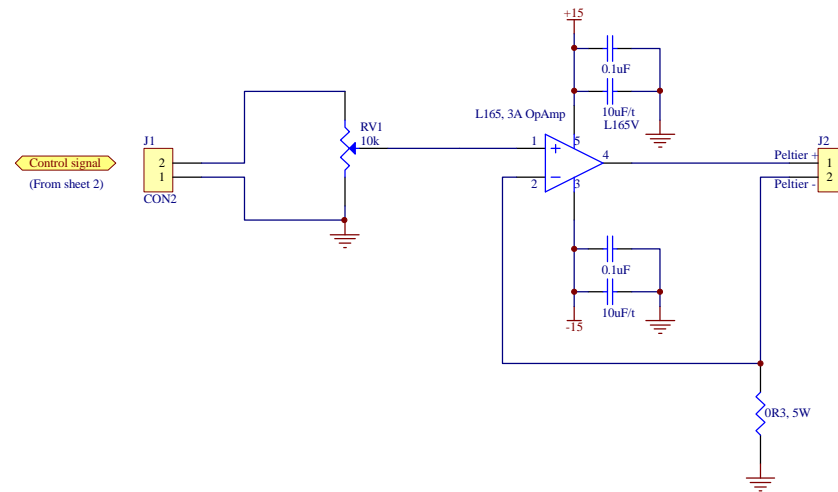
When turning integrator off with J12, capacitor will still charge and change output.
Need to have integrator on/off jumper AFTER the integrator amplifier U12.



FLINDERS UNIVERSITY SCHOOL OF PHYSICAL	OF S.A. SCIENCES
DESIGN REF _____	

LASER DIODE TEMPERATURE CONTROLLER

Title	DATE DRAWN	JOB NO.
Size A3	Number PCB NO.	Revision DRAWING NO.
Date: 28-Sep-2001	Sheet	A3-354
File: D:\data_atom\electronics\melburn\temp controller\laser diode\temp controller.ddb	Sheet	



Current monitor

Voltage across 0.3 ohm resistor gives current
 $i = 3.33 \text{ V}$

(+) Positive for cooling

Title		
Temperature controller, Power stage		
Size	Number	Revision
B		
Date:	28-Sep-2001	Sheet of
File:	D:\data_atom\electronics\melbuni\temp_control\2001\temp_controller.ddb	